

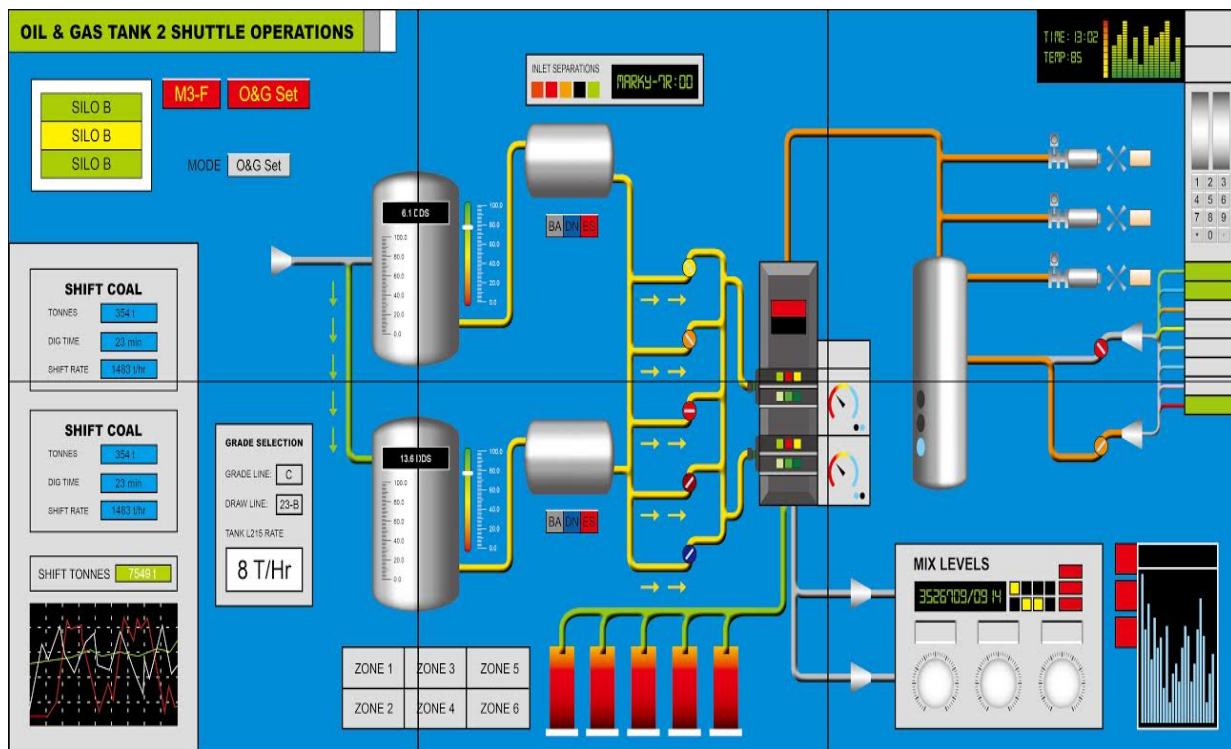
**White Paper**

# **Control Room Display Solutions**

Operate, monitor and control processes efficiently  
and ergonomically

## Video Wall Displays

The core of ARISTA Video Wall Displays is ADM-5855VW LCD Module, 55" super narrow bezel, 1920 x 1080, 16:9 LCD display with built-in controller. With ADM-5855VW, video wall can be built in any matrix layout, 2x2, 3x3, 4x3, etc. ADM-5855VW and can be easily installed maintained and operated. Ideal for large and small control rooms, ADM-5855VW LCD module for video wall embeds the latest "super narrow bezel" LCD displays with LED back light. This LCD video wall display can be expanded with growing requirements, to know more call 1-877-827-4782 or email [sales@goarista.com](mailto:sales@goarista.com).

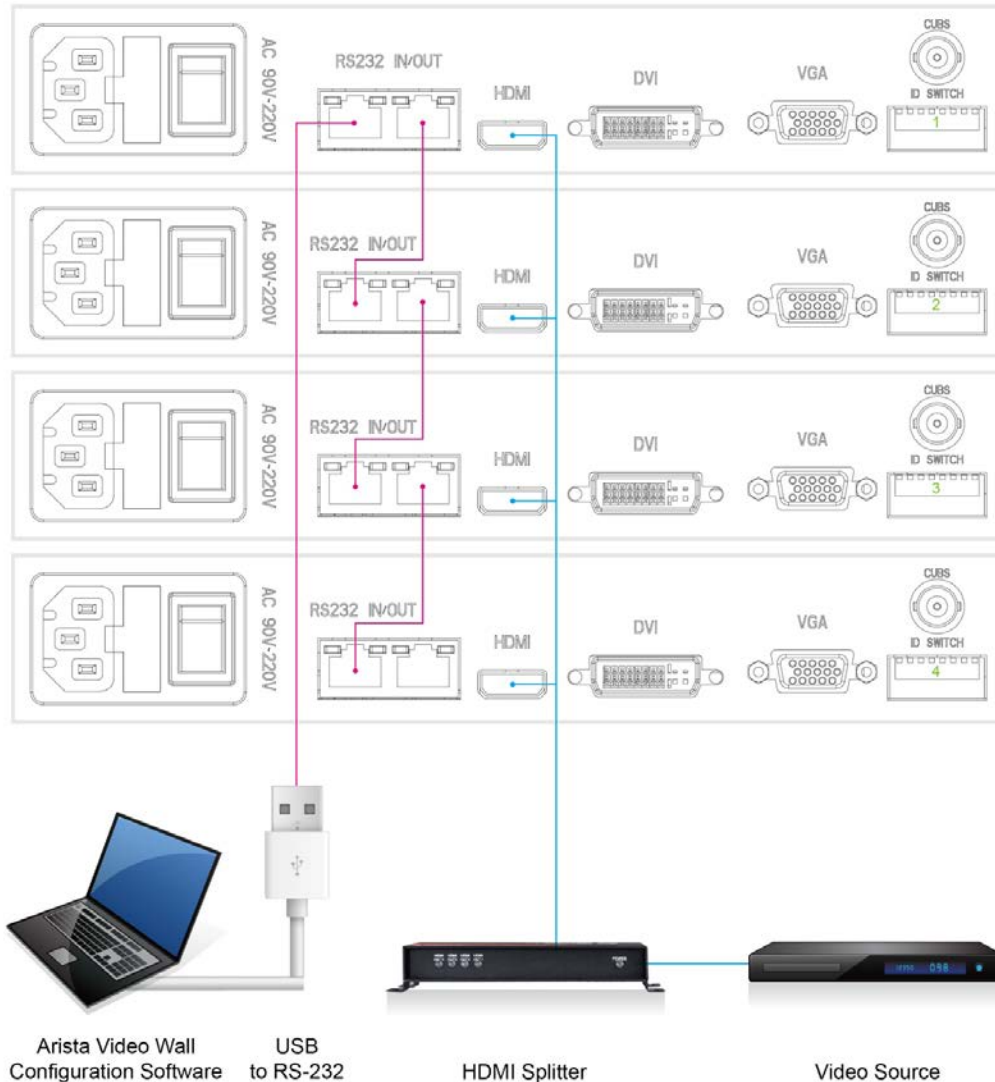


## How the LCD Video Wall Works

The ARISTA ADM-5855VW LCD Module for video wall has a built-in controller; all modules are daisy chained with multiple screen depending on space. The video source of each LCD module fed video signal via video splitter outputs and video splitter video input is connected to original video source.

The setup software runs on the computer which communicates with video wall via RS-232 interface or via USB to RS-232 interface. The software allow user to define the layout of video wall and adjust the width of LCD module bezels. After the setup data is stored in the controller of LCD modules, it is automatically saved for future use.

Refer to the diagram below for video wall functioning.



## Multi-Display-Output Thin Clients

***Increase visualization and expand your view by displaying multiple applications on a single monitor or span single application across several monitors with single Thin Client.***

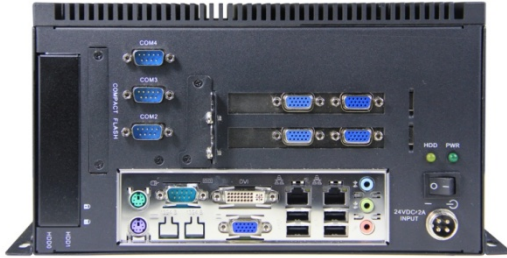
ARISTA's ThinManager Ready MultiMonitor Thin Clients allows users to display up to five screens through a single thin client. MultiMonitor Thin Client can be used to span sessions across monitors and/or run individual or multiple sessions on each monitor. Users can place monitors at any location within the virtual space and can even combine spanning and multiple sessions

on a single thin client. Users can use two adjacent monitors to span a single session while two other monitors are used to display sessions running on other servers. MultiMonitor Thin Client supports spanned resolutions up to 8192 x 8192 with 64K colors for MS Server 2012 and other latest versions. MS Server 2008 and prior version are limited to a spanned resolution of 4096 x 2048.

## AP-3500-E01 Dual HDMI Interfaces



**BoxPC-138-D00-003  
Triple VGA (DVI) Outputs**



**BoxPC-238-D00-003**

**Five VGA (DVI) Outputs**



**BoxPC-138-G00-00D**

**Five HDMI Outputs**

## 4K UHD Display in the Control Room

4K ultra high definition (UHD) resolution offer real-time accurate value in control room environments with multiple screens deployed in control room applications. ARISTA's BoxPC-138-G00-00D with ThinManager 9.0 supports Virtual Screens, it allows screen to divide in separate display sections with multi-monitor functionality to a single physical 4K UHD LCD display monitor. There will be 1920 x 1080 pixels for each section when 4K UHD LCD display monitor is split into quad view and each section represents a Full HD screen supporting up to 1920 x 1080 resolution.



## Quad View Video Processor

ARISTA's Quad View Processors, MVD Series, offers the ability to display multiple video sources on a single LCD display. This functionality has literally changed the way production control rooms are designed and implemented.



### **MVD Series** Quad View Video Processor

Marine • Healthcare • Automation • Government • Military

## Multi-Monitor vs. Multi-View Visualization Technology

Often there are multiple monitors at each workstation in the control room, to keep control operators have to go back and forth from one to another. With ARISTA's MVD Quad View Processor, upto four screens can be combined on one LCD display, thus allowing operators the convenience to track a single screen.



## Video Extender

The keyboard video mouse (**KVM**) extenders are ideal for places where Thin Clients or computers are installed at a distance. ARISTA offers variety of extenders to meet all various video source requirements including VGA, DVI, and HDMI video signal.

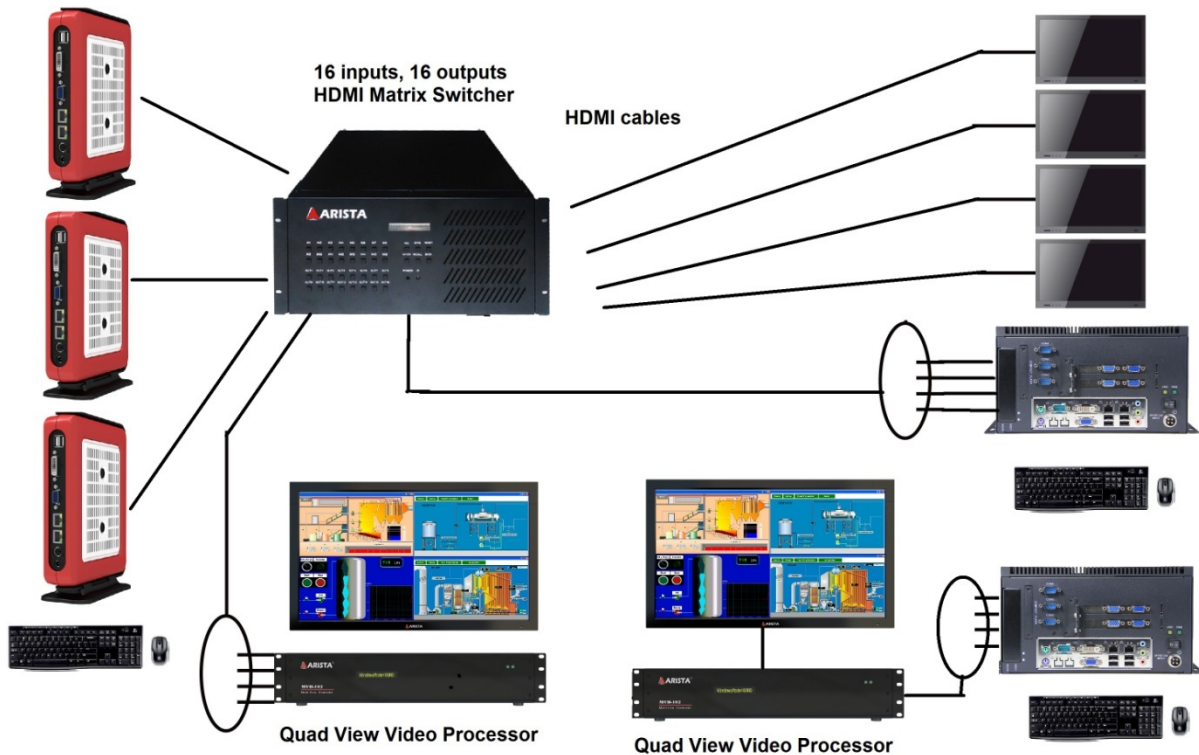


MODEL	Video	RS-232	USB	PS/2	Audio	Power	CABLE	Length
<b>VGA RS-232 Extender</b>								
ARD-1000	VGA	RS-232	NA	NA	NA	5 VDC	CAT5	1,000
ARD-1001	VGA	RS-232	KB/MS	Remote	NA	9~36 VDC	CAT5	1,000
<b>HDMI/DVI RS-232 Extender</b>								
ARD-1002	HDMI/DVI	RS-232	KB/MS	Remote	HDMI	9~36 VDC	CAT5e/CAT6	330
<b>HDMI/DVI RS-232 Extender Over Fiber</b>								
ARD-1004	HDMI	RS-232	KB/MS	Remote	HDMI	9~36 VDC	Fibre	6KM
<b>USB Extender</b>								
ARD-1003	NA	NA	4	NA	NA	9~36 VDC	CAT5e/CAT6	500
<b>DVI Extender</b>								
ARD-1005	DVI	NA	NA	NA	NA	48VDC	CAT5e/CAT6	330
<b>HDBASE-T Extender</b>								
ARD-1007	HDMI	RS-232	KB/MS	N/A	HDMI	48VDC	CAT5e/CAT6	330
<b>HDBASE-T Extender</b>								
ARD-1008-RX	HDMI	RS-232	NA	NA	HDMI	PoE	CAT5e/CAT6	330

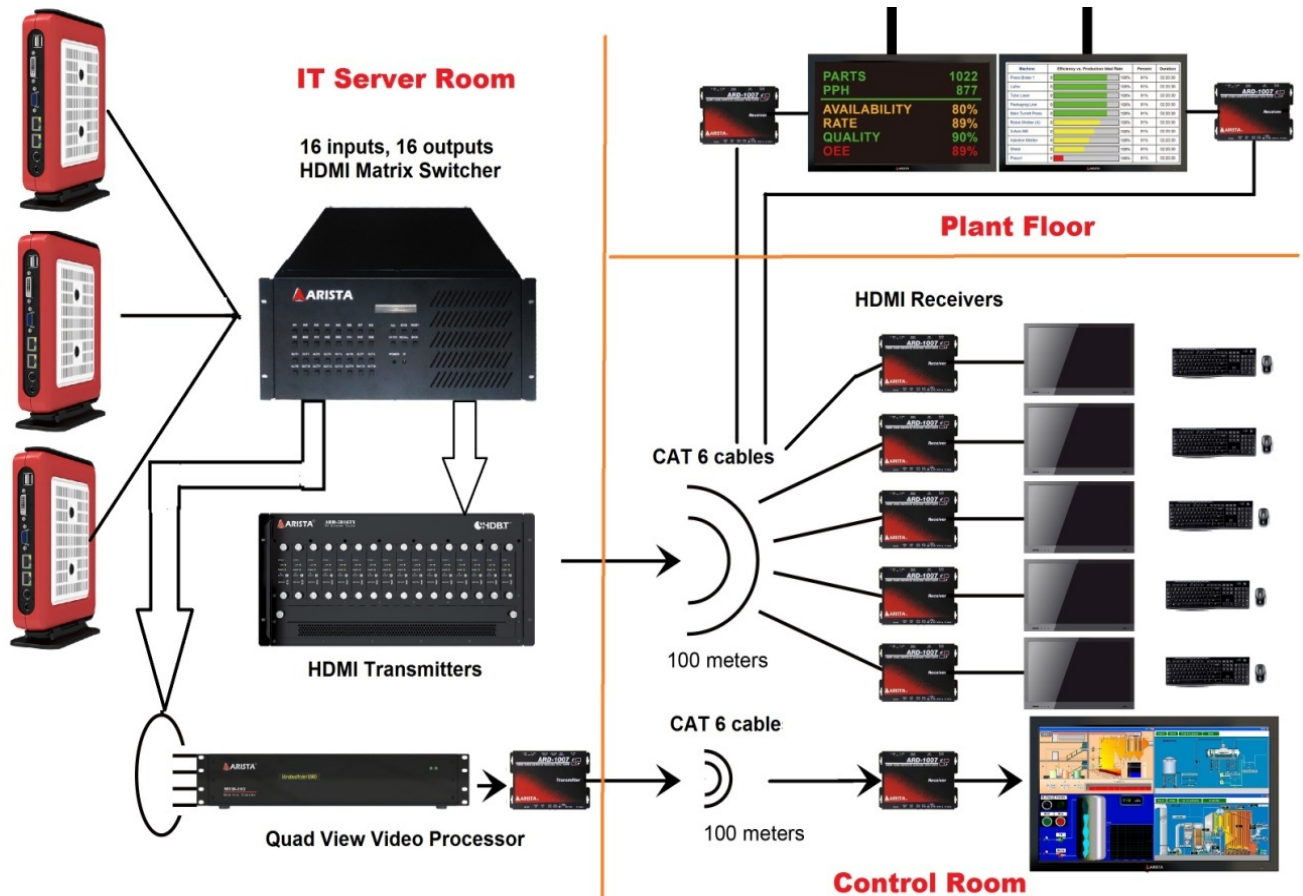
## HDMI Matrix Switcher

### AMP-1616

AMP-1616 is 16 HDMI input and output matrix switcher; it allows HDMI input to be routed to any HDMI output and vice versa.





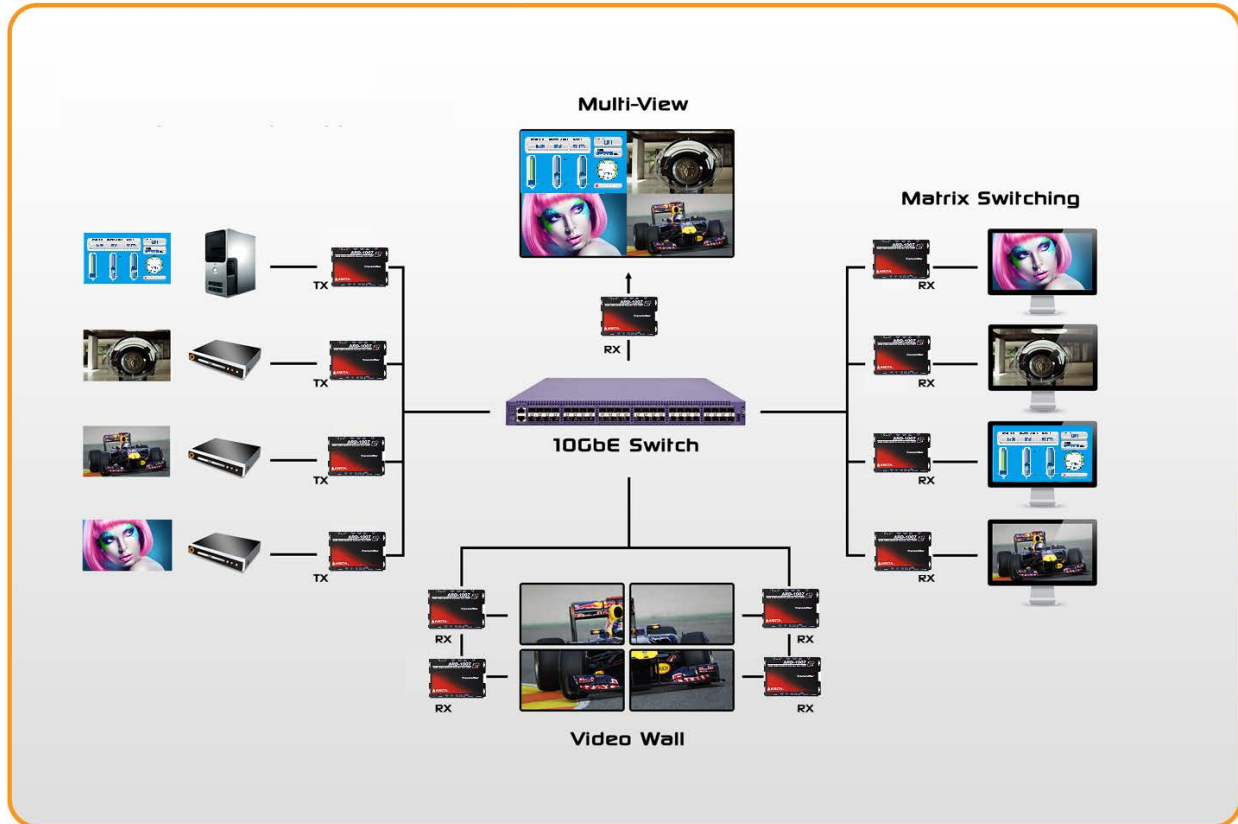


## HDMI over IP

### All-in-one Extension, Switching, Processing

Pushing the envelope on multimedia connectivity between AV sources and remote displays, ARISTA's ARD-3001 integrates long distance extension, IP-based switching, and advanced AV signal processing of Ultra-HD video, audio, and control signals into a single box. Arista's ARD-3001 is suitable for use in virtually all AV signal distribution applications including AV/KVM extension, AV/KVM switching, video-wall and multi-view.

Using a synchronous, packet-based architecture for pixel transmission, Arista's ARD-3001 can extend and independently switch video, audio, gigabit Ethernet, and other control signals through off-the-shelf Ethernet switches. Replacing custom AV matrix switches with standard networking hardware dramatically reduces the cost of large scale control room installation while eliminating the complexity of installation.



ARISTA Corporation is proud to have a talented team of engineers who incorporate expert knowledge, research and efforts to deliver the best. With headquarters in Fremont California, ARISTA has offices in China, Taiwan, and India. Our website [www.aristaipc.com](http://www.aristaipc.com) provides detailed information about products, parts, technical support etc. Contact [sales@goarista.com](mailto:sales@goarista.com) or [support@goarista.com](mailto:support@goarista.com) for any information or call us at 1.877.827.4782 Monday through Friday PST 8:00am to 5:00pm.

## Disclaimer

This document is the property of ARISTA Corporation; all rights are reserved in favor of the owner. Any part of this document, thereof, should not be copied, re-distributed or published without prior permission from ARISTA Corporation. Content in this document is subject to changed, revised, edited, improved or discontinued anytime without notice.